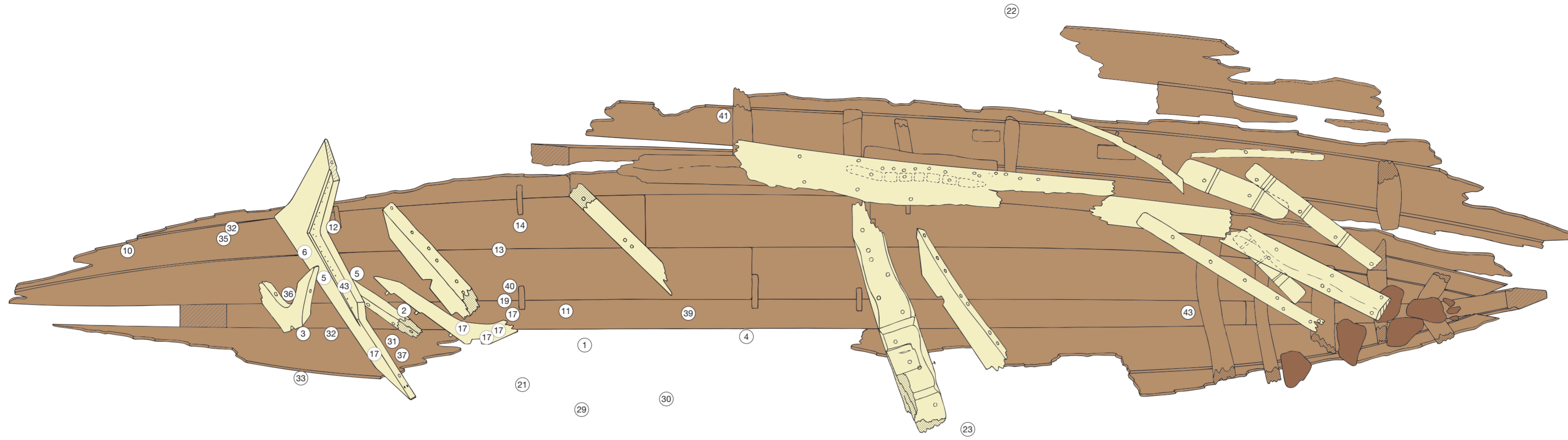
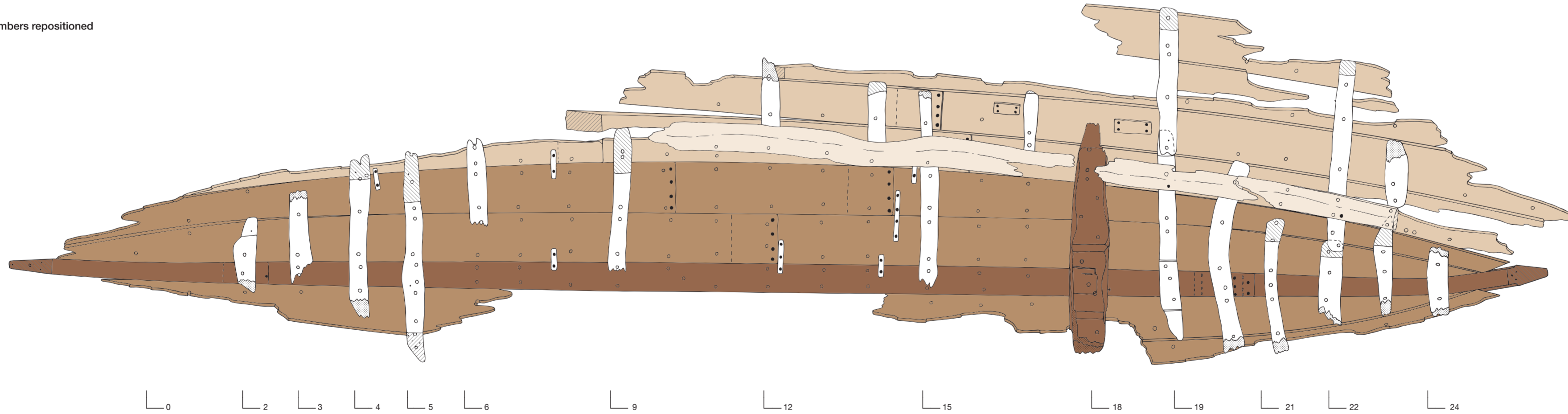


A. The wreck



B. The wreck with timbers repositioned



Legend to A

- Still joined-up timbers
- Detached timbers
- Scarf, cross-cut wood
- Broken-off frame
- Ballast stones
- 17 Find number and findspot

Legend to B

- Keel plank, stern- and stem hooks, mast step
- Bottom planking
- Planking of the sides
- Ceiling boards
- Frames, remains of temporary framing
- Cross-cut wood
- Broken-off frame
- Frame number

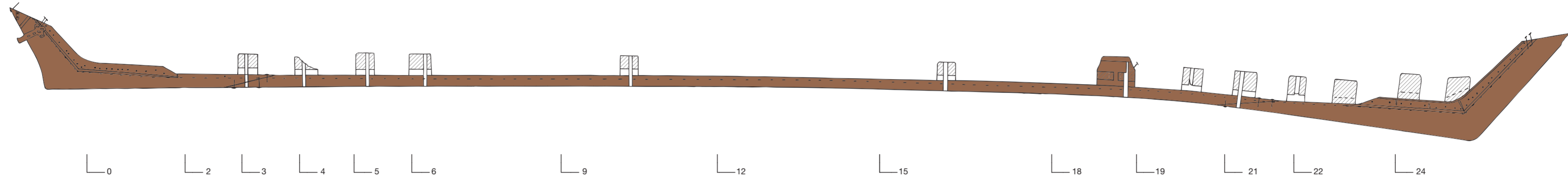
Field drawings

- A. Top view with the detached timbers and the distribution of finds.
- B. Top view after relocation of the detached timbers to their original positions.

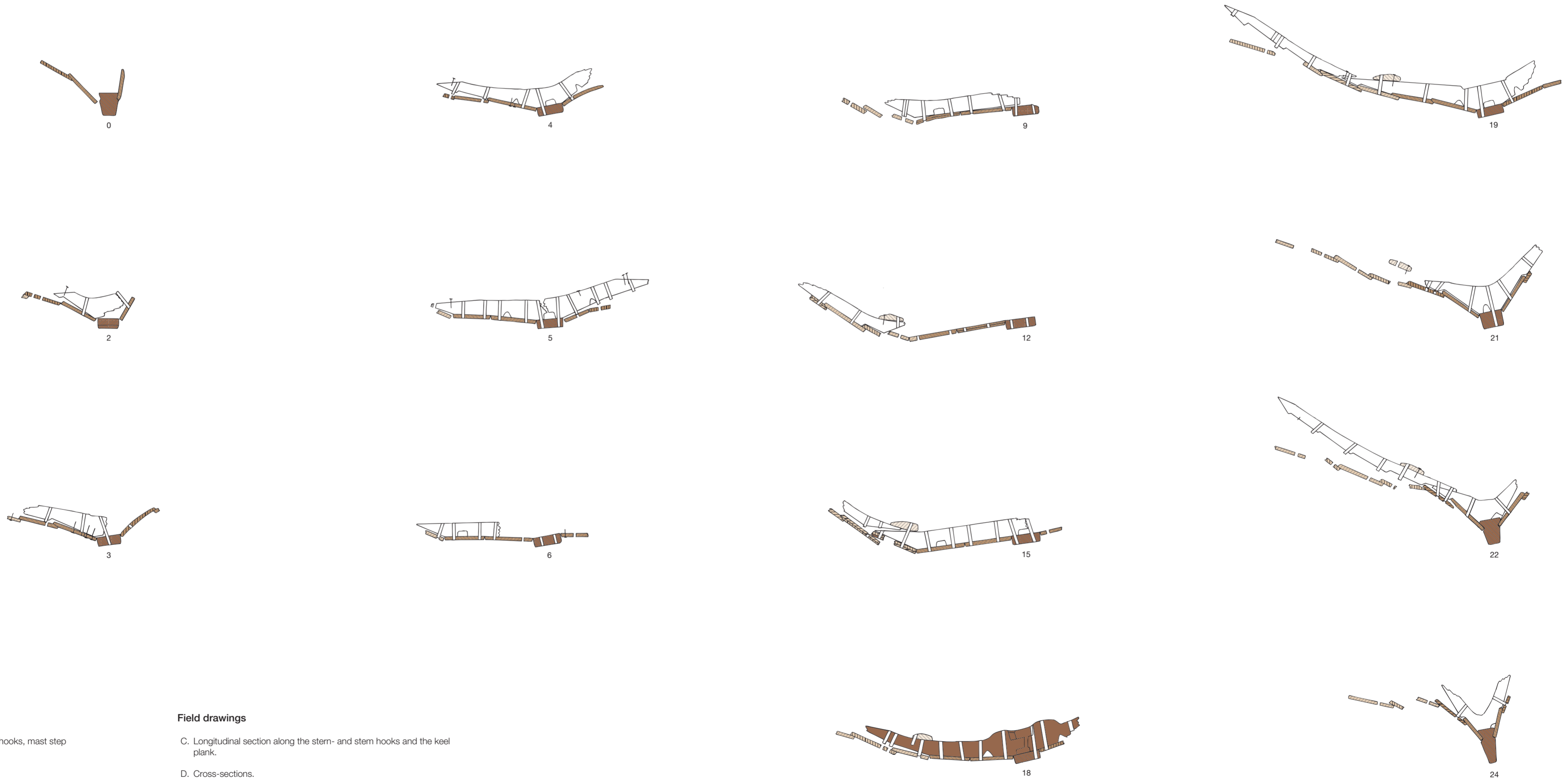
Scale



C. Longitudinal section

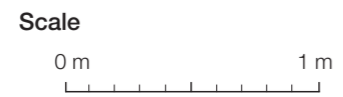


D. Cross-sections

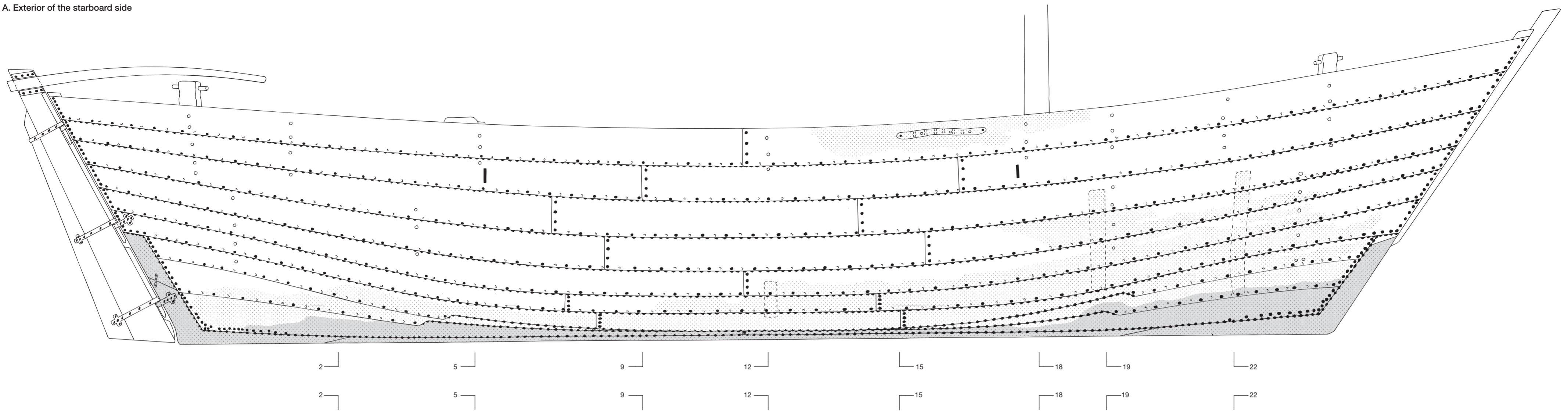


- Legend**
- Keel plank, stern- and stem hooks, mast step
 - Bottom planking
 - Planking of the sides
 - Ceiling boards
 - Frames, trenails
 - Cross-cut wood
 - Frame number

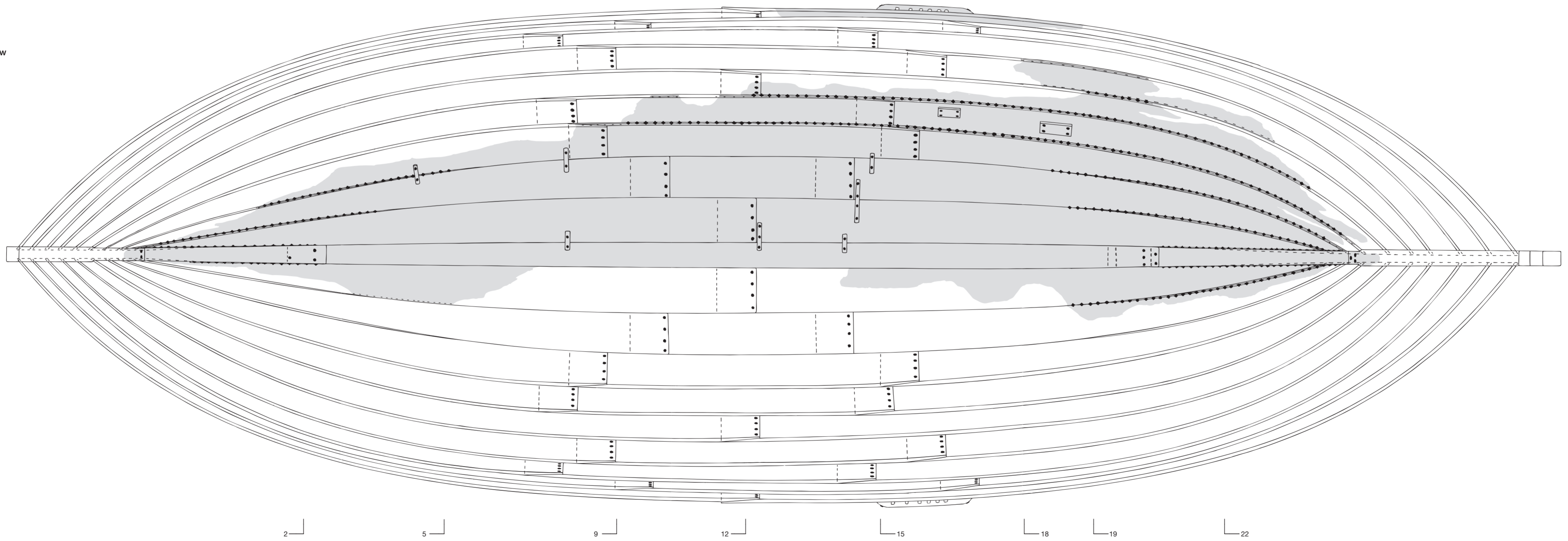
- Field drawings**
- C. Longitudinal section along the stern- and stem hooks and the keel plank.
 - D. Cross-sections.



A. Exterior of the starboard side



B. Top view



Legend

- Recovered parts of the starboard side (in A); recovered timbers (in B)
- Recovered parts of the port side (in A)
- Frame number

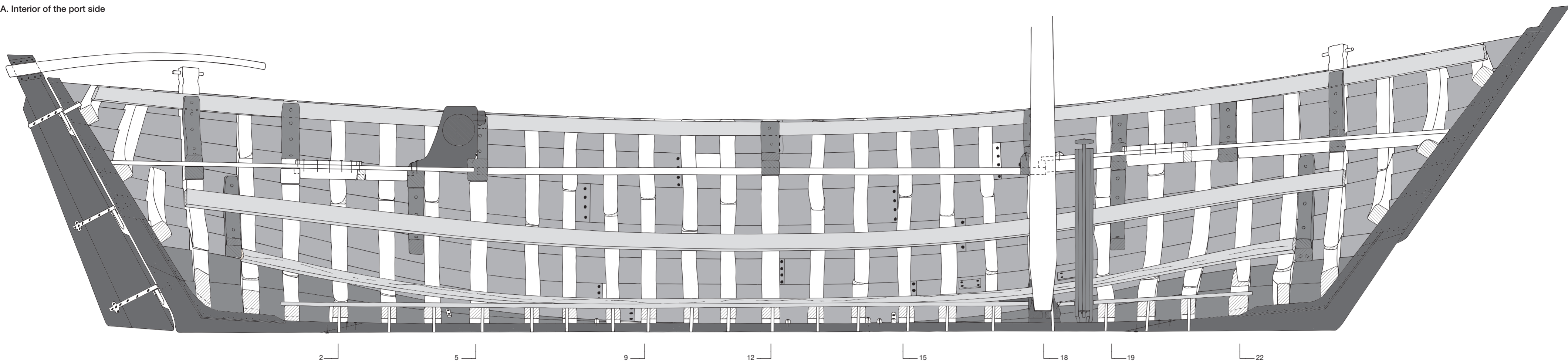
Reconstruction drawing

- A. Exterior of the starboard side, combining the recovered timbers of the starboard and port sides, and the seams with clamped moss caulking on the outside.
- B. Top view of the shell showing the plank scarfs, the recovered timbers, the repair planks, the retained 'temporary frames', and the shell seams internally closed with clamped moss caulking.

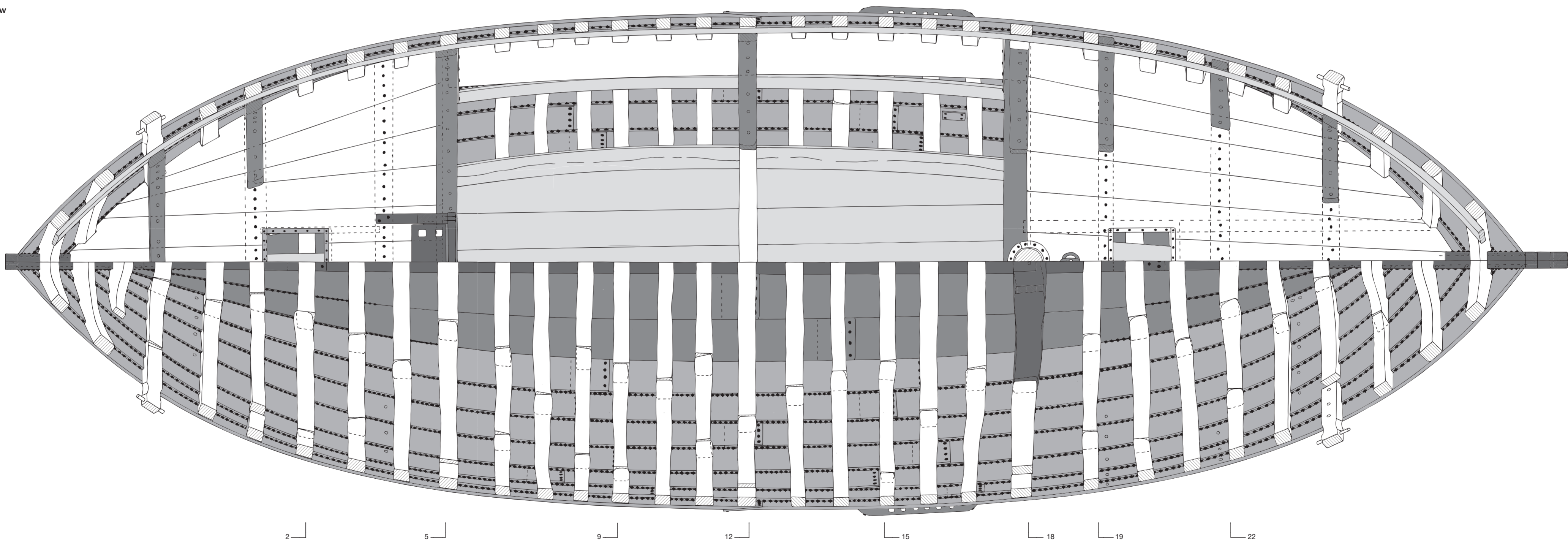
Scale



A. Interior of the port side



B. Top view



Legend

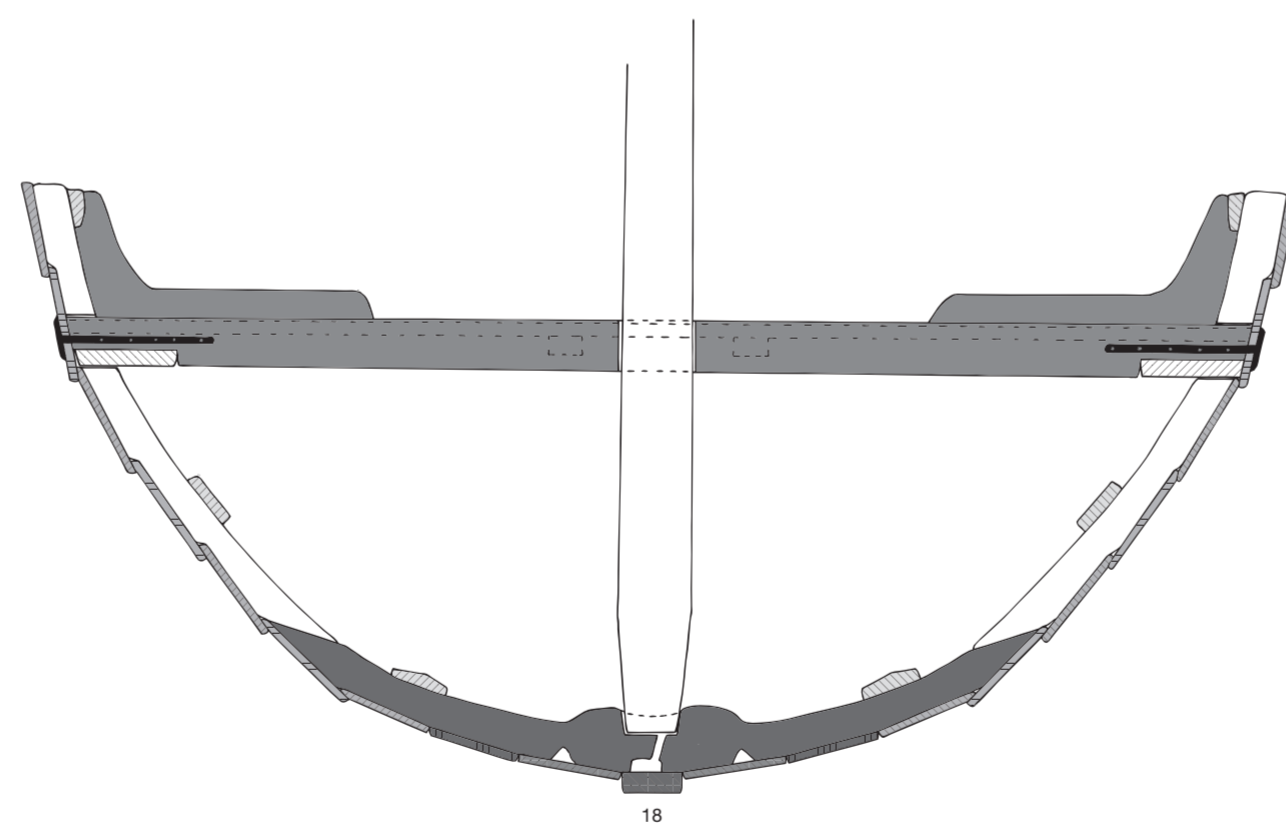
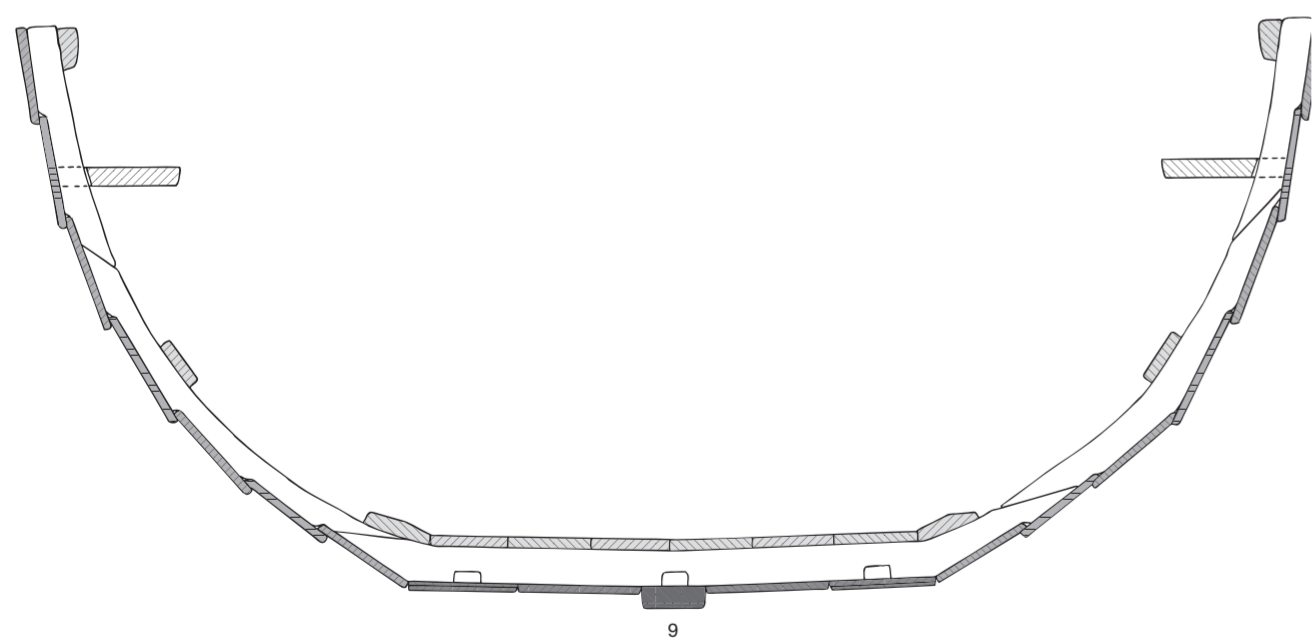
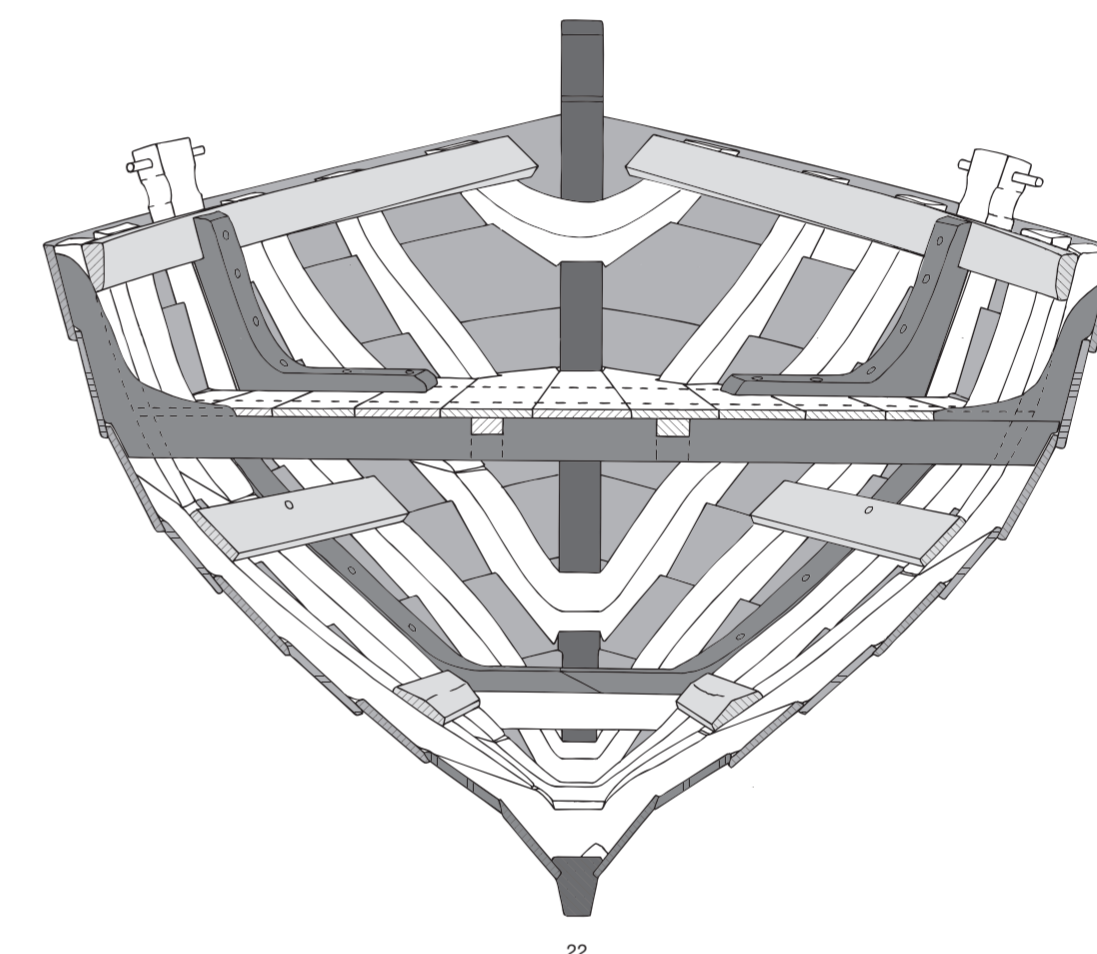
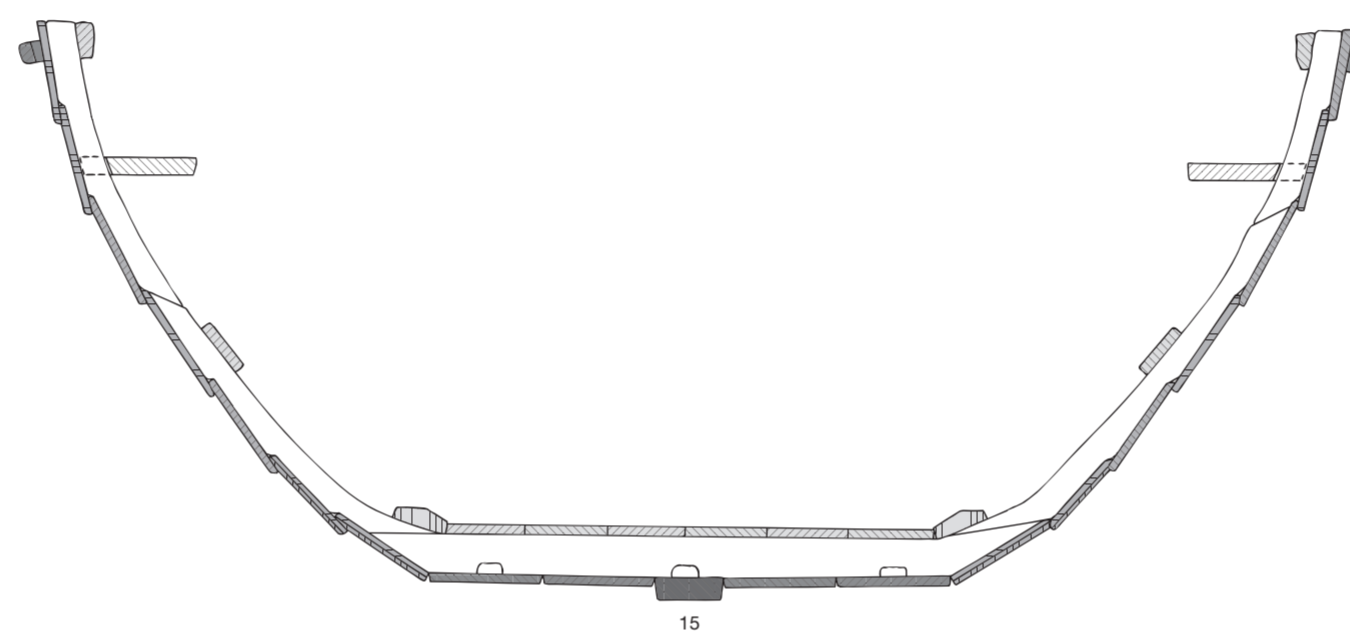
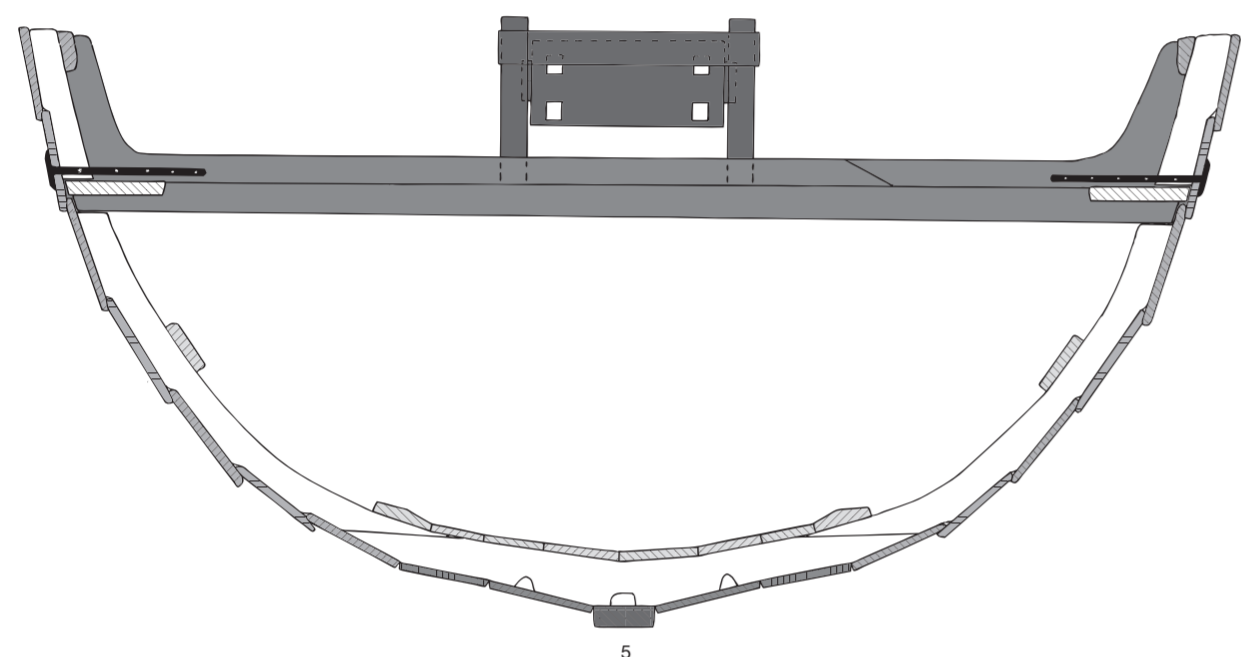
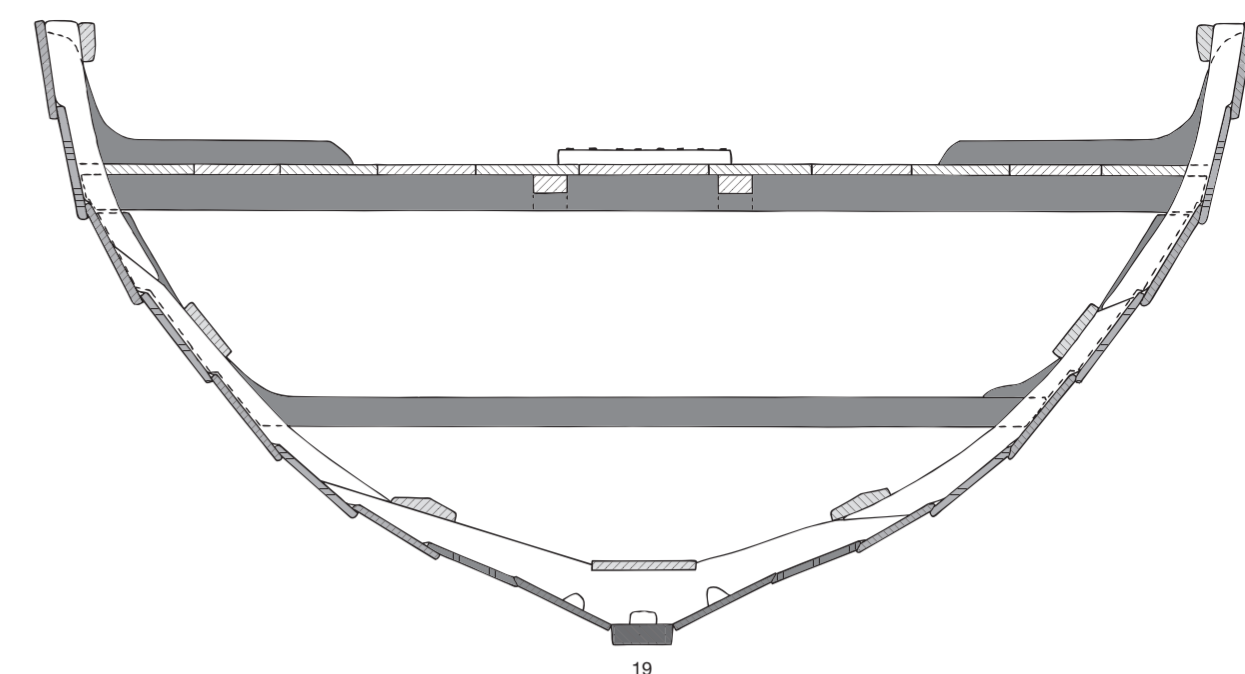
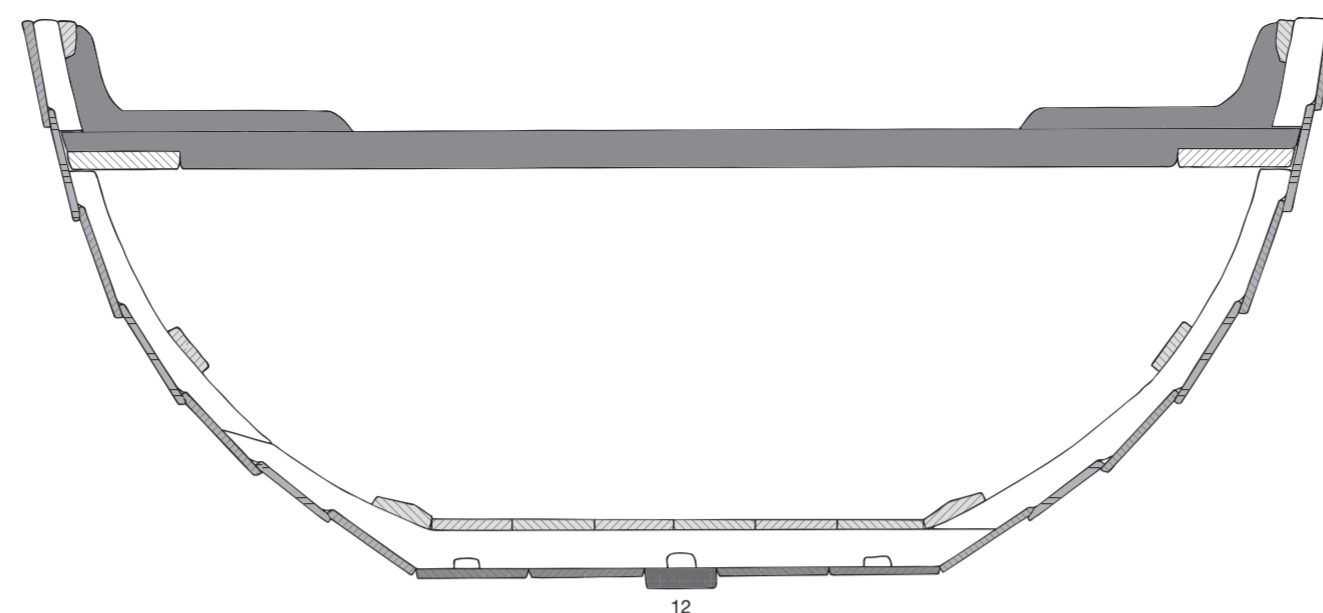
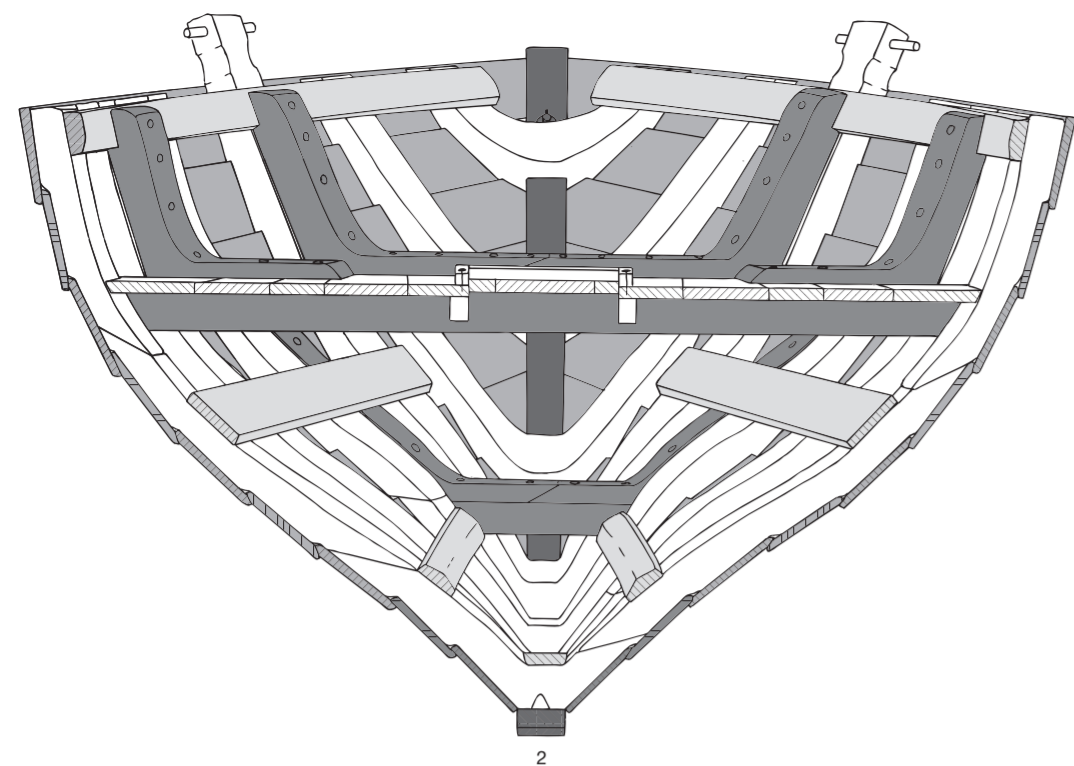
- Keel plank, stern- and stem hooks, stern- and stemposts, false stern, mast step, windlass, rudder
- Bottom planking, pump, topside crossbeams, (deck) knees, cross connections
- Planking of the sides
- Ceiling boards
- Frames, decks, gangways, coamings, stringers, cross connections, tiller, mast
- Cross-cut wood, scarfs
- Frame number

Reconstruction drawings

- A. Interior of the port side.
- B. Deck plan (port), and the frame plan (starboard).

Scale

0 m 1 m



Legend

- Keel plank, stern- and stem hooks, stern- and stemposts, false stern, mast step, windlass, rudder
- Bottom planking, pump, (deck) knees, topside crossbeams, cross connections
- Planking of the sides
- Ceiling boards
- Frames, decks, gangways, coamings, stringers, cross connections, tiller, mast
- Cross-cut wood, scarfs
- 6 Frame number

Reconstruction drawings

- C. Cross-sections.
- D. Lines and planking drawing of the upper edge of the shell strakes.
On the right, the interior of the forebody; on the left, of the afterbody.

Scale



D. Lines and planking drawing

